

SITA SMART PATH BAG DROP

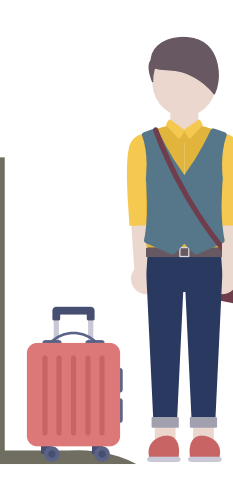


MAKING HASSLE-FREE BAG DROP THE INDUSTRY STANDARD.

Checking in baggage can be stressful for passengers. The good news is that with the right bag drop solution, every journey can get off to a great start.

A GROWING INDUSTRY

Rising passenger numbers result in demand for more capacity and self-service at airports around the world.



ADOPTION OF SELF-BAG DROP HAS RISEN

FROM **14%** IN 2019 UP TO **22%** IN 2022

IMPLEMENTATION OF UNASSISTED BAG DROP IS INCREASING

50% IN 2020 **69%** IN 2021 **90%** BY 2024

2021 Air Transport IT Insights

SELF-BAG DROP REMAINS KEY



35% INVESTED IN BAG DROP IN 2020

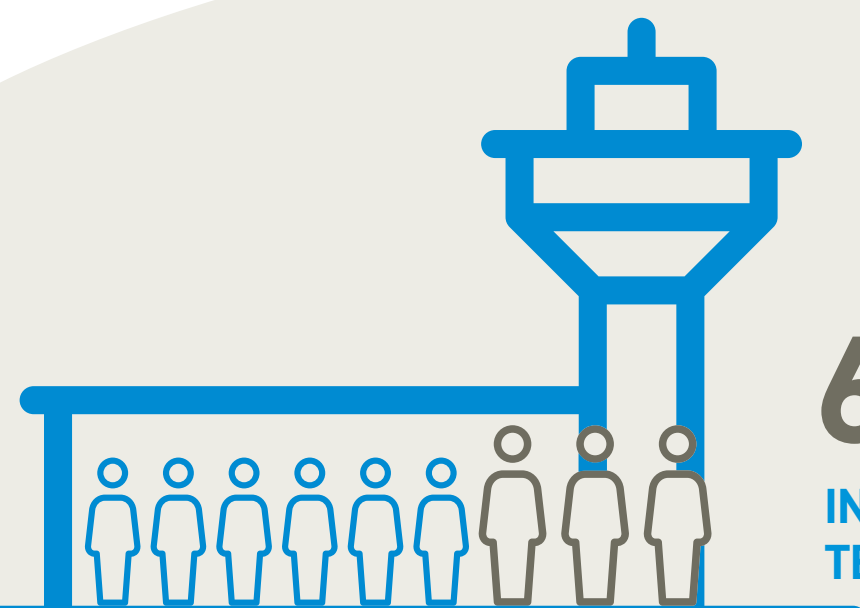


WITH A FUTURE 32% PLANNING TO INVEST



INCREASING TO 46% INVESTMENT IN 2021

2021 Air Transport IT Insights

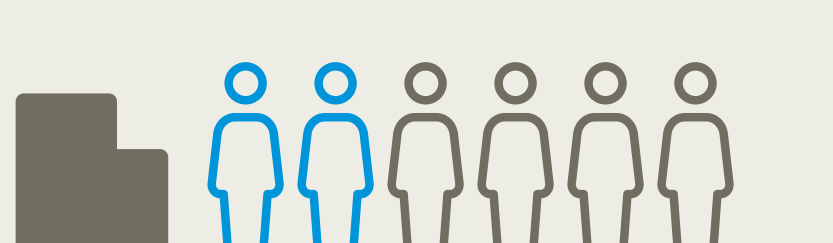


60% INCREASE IN TERMINAL CAPACITY

WHY BAG DROP IS RIGHT FOR YOU

With SITA Smart Path Bag Drop, everybody wins. Airports increase their terminal capacity, airlines' operating costs fall and passengers have a quick and easy start to their journey.

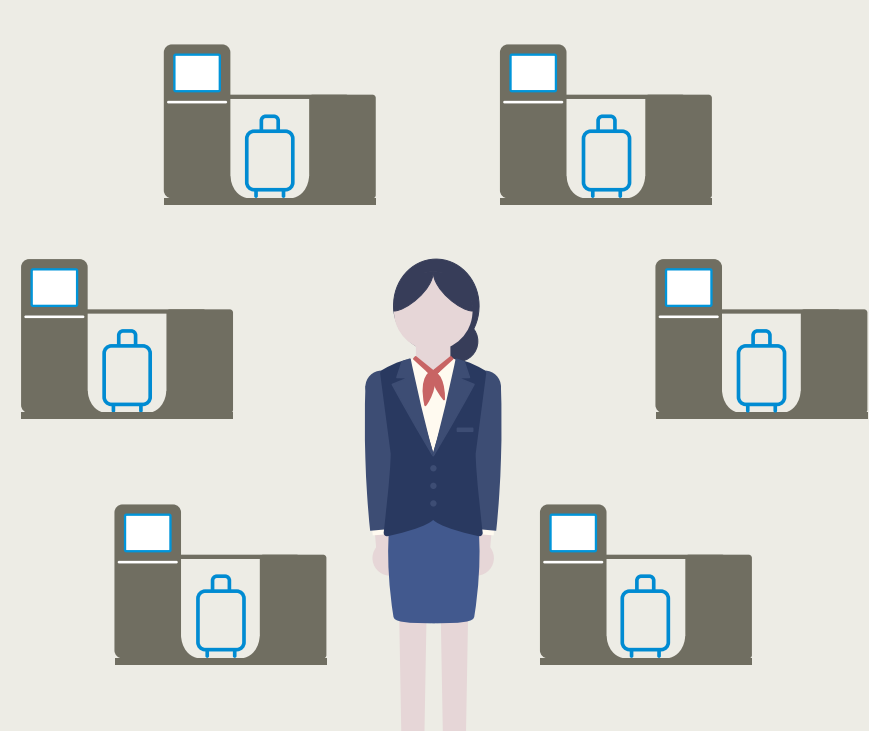
60 SECONDS OR LESS TO DROP YOUR BAG



SHORTER QUEUES

Give passengers more time to eat, drink and shop before boarding their flights.

40% REDUCTION IN OPERATIONAL COSTS



ONE AGENT FOR SIX BAG DROPS

Six traditional counters can be replaced by one agent and six bag drop units.



FUTURE PROOF

Bag drop is part of SITA Smart Path that allows passengers to pass through airports with a single biometric token for a seamless and secure end-to-end journey.

A SEAMLESS BAG DROP

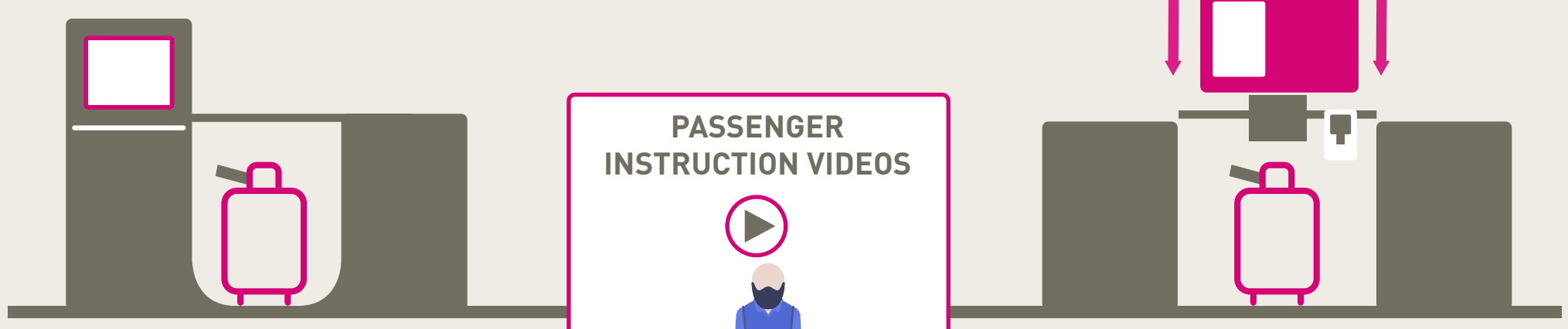
There's more to a successful self bag drop solution than hardware and software. Whether you're using existing check-in desks and conveyors or starting from scratch, SITA provides everything you need for a great passenger experience.

NEW-FIT

SITA SMART PATH DROP AND FLY
For new or refurbished terminals.

RETRO-FIT

SITA SMART PATH SCAN AND FLY
Mounted onto existing check-in desks with a smart support frame.



INTUITIVE BAG TAG

Designed for a simple bag drop.

PASSENGER INSTRUCTION VIDEOS

Clear instruction videos to prepare passengers for bag drop.



GLOBAL SUPPORT AND SERVICE

SITA's local presence for 24/7 service and support.



MONITOR PERFORMANCE

Monitor and improve process times using the SITA dashboard. With SITA Pax Locate dashboards usage trends can be shown across various products, even non-SITA touchpoints.



PROACTIVE SERVICE DURING BAG DROP

Ground agents use an interactive application to monitor all self bag drop units and help passengers as needed.

STAFF TRAINING

Extensive training for ground agents and maintenance teams to get the most out of self bag drop.



SIGNAGE

SITA advises on clear, well-located signage for an easy passenger experience.

KEY BENEFITS



HAPPY PASSENGERS



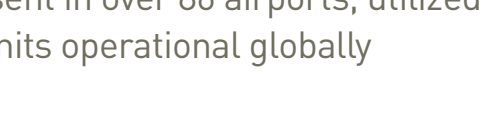
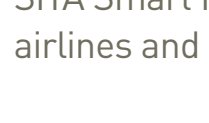
LOWER OPERATIONAL COSTS



MORE CAPACITY

WHO IS USING SITA SMART PATH BAG DROP TODAY?

SITA Smart Path Bag Drop is present in over 86 airports, utilized by 70+ airlines and has 1,180 bag drop units operational globally



AWARDS

SITA Smart Path Bag Drop is awarded for high-quality design, setting a new standard for functionality, user experience and design.



WANT TO LEARN MORE? CONTACT US AT:

bagdrop@sita.aero or visit SITA Smart Path Bag Drop