

SITA Airside Optimizer



# Optimize Airside Operations with real-time data

Microservices. Big results.

**SITA**



# Select your microservices. Celebrate your efficiency.

SITA Airside Optimizer is a flexible framework that supports Airport Collaborative Decision Making (A-CDM) microservices.

With innovative modules that include an Airside Real-time Surface Map, Airside Taxi Analytics, PDS Departure Sequencer, and Airside Emissions Analytics, your SITA Airside Optimizer will help you take proactive action to improve airside efficiency and cut CO2 emissions.



Use real-time  
information to  
make operational  
efficiencies



## Minimize your infrastructure management costs

SITA Airside Optimizer offers you a wide range of microservices which many work out of the box and are accessed via a fee per service. When you want to evolve your business, simply subscribe to the additional functionalities you need. Quick and agile, we can stand up a basic instance for you in under an hour.

In addition to being fast and flexible, as a cloud-first managed solution\*, SITA Airside Optimizer provides the functionality you need without incurring unnecessary infrastructure management costs.



Airside real-time surface map



Proactive departure sequencing and management



Analytics to improve airside sustainability



Other innovative modules

# Only subscribe to the microservices you need, accessible on any device

\*An on-premises version can be provided if you prefer

# Improving your view for greater efficiency

An intuitive core portal simplifies flight management, providing an A-CDM Information Sharing Platform (ACISP) for collection and distribution of relevant data across stakeholders in real-time.



## Static map

Standard package includes a static map showing aircraft on stands.



## Departure sequencing

Departure sequencing and management tools enable proactive optimization of off-block sequences.



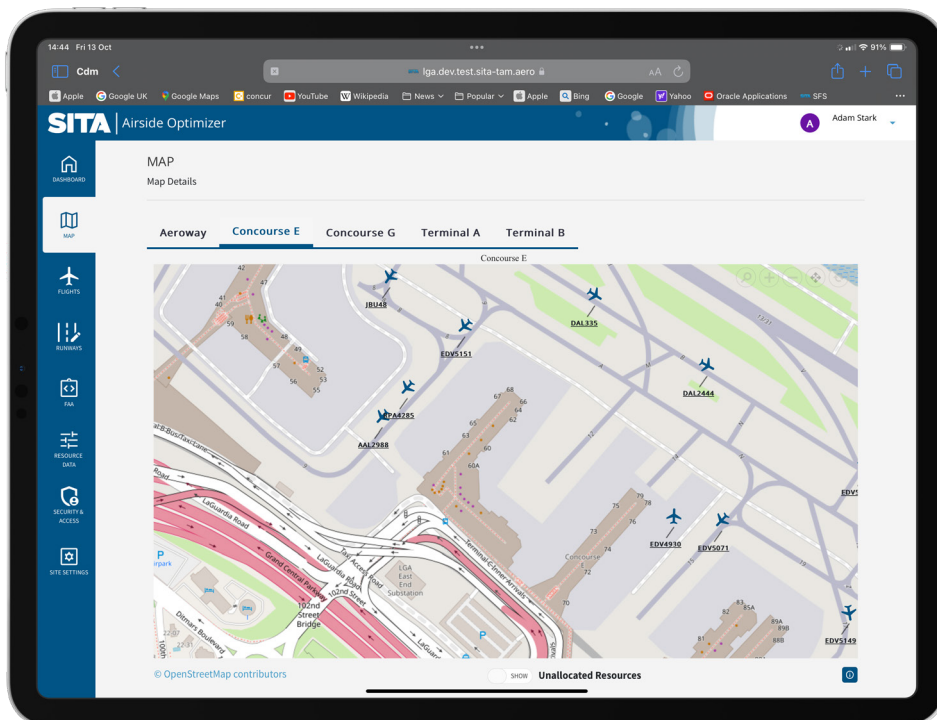
## Real-time map

Upgrade to a real-time airside map option to track all aircraft movements in real time.



## Timestamps

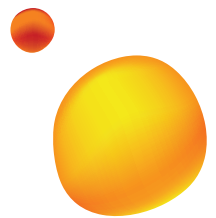
Get a clear view of aircraft turnaround events, with AI providing timestamps in real time.







## Stakeholder collaboration makes cutting costs and emissions a reality



Make savings straightaway, using A-CDM through SITA Airside Optimizer.



Minimize wasted fuel burn by reducing time between start up and take off. Departure Manager (DMAN) or Pre-departure sequencing (PDS) help you make informed decisions.



No need to waste time and resources. With the AMS A-CDM De-Icing Planner, just-in-time delivery of aircraft for de-icing ensures Target Take Off Times (TTOT) are met.



Using Taxi Time Analytics with machine learning to predict taxi times, and analyzing runway occupancy and delays, queuing is significantly reduced, which minimizes fuel burn.



Reduce fuel use through Airside Emissions Analytics and move one step closer to achieving your sustainability targets.



# Freedom to choose a custom solution with just the A-CDM components that you need

SITA Airside Optimizer supports an ever-growing selection of Airport Collaborative Decision Making (A-CDM) services. Designed to facilitate easy access to relevant, real-time information, it enables you to prioritize operational areas for improvement to align with your strategic targets.

## Time

Streamlines departures and reduces unnecessary flight delays

## Emissions

Minimizes time and fuel burn between start up and take off

## Costs

Smoother processes mean fewer delays and less resource waste.

## Stand up an instance in just 20 minutes

— Solution

## Keep making improvements

SITA Airside Optimizer is a future-focused framework designed to evolve and accommodate the latest optimization advances through new and updated microservices.





# Contact

**SITA Airside Optimizer gives you the flexibility to prioritize operational areas for improvement. Implement the whole package or pick and choose microservices to suit your strategic objectives and budget. The choice is yours.**

**To discuss how the latest functionalities could improve operational efficiency for you, [get in touch.](#)**

**SITA**